



Product designation				Power contactor
Product type designation				BF150
Contact characteristics				
Number of poles	Nr.			3
Rated insulation voltage U_i IEC/EN	V			1000
Rated impulse withstand voltage U_{imp}	kV			8
Operational frequency	min	Hz	25	
	max	Hz	400	
IEC Conventional free air thermal current I_{th}	A			165
Operational current I_e	AC-1 (=40°C)	A	165	
	AC-1 (=55°C)	A	135	
	AC-1 (=70°C)	A	118	
	AC-3 (=440V =55°C)	A	150	
	AC-4 (400V)	A	70	
Rated operational power AC-3 (T=55°C)	230V	kW	45	
	400V	kW	75	
	415V	kW	75	
	440V	kW	75	
	500V	kW	90	
	690V	kW	110	
	1000V	kW	55	
Rated operational power AC-1 (T=40°C)	230V	kW	62	
	400V	kW	110	
	500V	kW	136	
	690V	kW	187	
IEC max current I_e in DC1 with L/R = 1ms with 1 poles in series	=24V	A	165	
	48V	A	165	
	75V	A	150	
	110V	A	10	
	220V	A	-	
IEC max current I_e in DC1 with L/R = 1ms with 2 poles in series	=24V	A	165	
	48V	A	165	
	75V	A	165	
	110V	A	150	
	220V	A	14	
IEC max current I_e in DC1 with L/R = 1ms with 3 poles in series	=24V	A	165	
	48V	A	165	
	75V	A	165	

	110V	A	160
	220V	A	150
<hr/>			
IEC max current I _e in DC1 with L/R = 1ms with 4 poles in series			
	=24V	A	165
	48V	A	165
	75V	A	165
	110V	A	165
	220V	A	165
<hr/>			
IEC max current I _e in DC3-DC5 with L/R = 15ms with 1 poles in series			
	=24V	A	165
	48V	A	60
	75V	A	44
	110V	A	6
	220V	A	–
<hr/>			
IEC max current I _e in DC3-DC5 with L/R = 15ms with 2 poles in series			
	=24V	A	165
	48V	A	82
	75V	A	70
	110V	A	80
	220V	A	7
<hr/>			
IEC max current I _e in DC3-DC5 with L/R = 15ms with 3 poles in series			
	=24V	A	165
	48V	A	195
	75V	A	110
	110V	A	120
	220V	A	120
<hr/>			
IEC max current I _e in DC3-DC5 with L/R = 15ms with 4 poles in series			
	=24V	A	165
	48V	A	130
	75V	A	130
	110V	A	150
	220V	A	150
<hr/>			
Short-time allowable current for 10s (IEC/EN60947-1)		A	1200
<hr/>			
Protection fuse			
	gG (IEC)	A	250
	aM (IEC)	A	160
<hr/>			
Making capacity (RMS value)		A	1500
<hr/>			
Breaking capacity at voltage			
	440V	A	1200
	500V	A	1025
	690V	A	905
<hr/>			
Resistance per pole (average value)		m?	0.45
<hr/>			
Power dissipation per pole (average value)			
	I _{th}	W	12
	AC3	W	10.1
<hr/>			
Tightening torque for terminals			
	min	Nm	6
	max	Nm	7
	min	I _{bin}	35.4
	max	I _{bin}	44.3
<hr/>			
Tightening torque for coil terminal			
	min	Nm	0.8
	max	Nm	1

		min	I _{bin}	0.59
		max	I _{bin}	0.74
Conductor section	AWG/Kcmil			
		max		2/0
	Flexible w/o lug conductor section	min	mm ²	1.5
		max	mm ²	70
	Flexible c/w lug conductor section	min	mm ²	1.5
		max	mm ²	70
Power terminal protection according to IEC/EN 60529				IP20 front
Mechanical features				
Operating position		normal allowable		Vertical plan ±30°
Fixing				Screw / DIN rail 35mm
Weight			g	2060
Conductor section	AWG/kcmil conductor section			
		max		2/0
Operations				
Mechanical life			cycles	15000000
Electrical life			cycles	800000
Safety related data				
Performance level B10d according to EN/ISO 13489-1		rated load	cycles	800000
Mirror contacts according to IEC/EN 60947-4-1				yes
EMC compatibility				yes
AC coil operating				
Rated AC voltage at 50/60Hz, 60Hz		min	V	20
		max	V	48
AC operating voltage	of 50/60Hz coil powered at 50Hz			
	pick-up	min	%U _s	80 U _s min
		max	%U _s	110 U _s max
	drop-out	max	%U _s	=70 U _s min
	of 50/60Hz coil powered at 60Hz			
	pick-up	min	%U _s	80 U _s min
		max	%U _s	110 U _s max
	drop-out	max	%U _s	=70 U _s min
AC average coil consumption at 20°C	of 50/60Hz coil powered at 50Hz			
		in-rush	VA	70...175
		holding	VA	1.7...3.5
	of 50/60Hz coil powered at 60Hz			
		in-rush	VA	70...175

	holding	VA	1.7...3.5
of 60Hz coil powered at 60Hz			
	in-rush	VA	70...175
	holding	VA	1.7...3.5
Dissipation at holding =20°C 50Hz		W	1.3...1.5
DC coil operating			
DC rated control voltage			
	min	V	20
	max	V	48
DC operating voltage			
pick-up			
	min	%Us	85 Us min
	max	%Us	110 Us max
drop-out			
	max	%Us	=70 Us min
Average coil consumption =20°C			
	in-rush	W	70...80
	holding	W	1.3...1.5
Max cycles frequency			
Mechanical operation		cycles/h	2000
Operating times			
Average time for Us control			
in AC			
Closing NO			
	min	ms	45
	max	ms	90
Opening NO			
	min	ms	24
	max	ms	60
in DC			
Closing NO			
	min	ms	45
	max	ms	90
Opening NO			
	min	ms	24
	max	ms	60
UL technical data			
Yielded mechanical performance			
for three-phase AC motor			
	200/208V	HP	50
	220/230V	HP	50
	460/480V	HP	100
	575/600V	HP	125
General USE			
Contactor			
	AC current	A	165
Short-circuit protection fuse, 600V			
High fault			
	Short circuit current	kA	100
	Fuse rating	A	200
	Fuse class		J
Standard fault			
	Short circuit current	kA	10
	Fuse rating	A	250

Fuse class RK5

Ambient conditions

Temperature

Operating temperature

min	°C	-40
max	°C	70

Storage temperature

min	°C	-50
max	°C	80

Max altitude

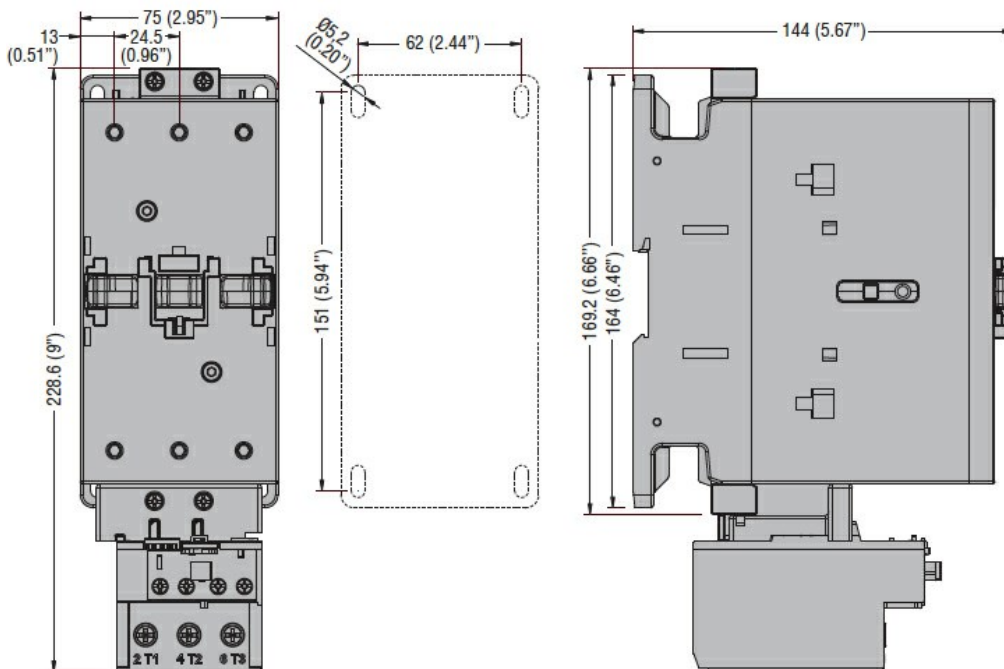
m 3000

Resistance & Protection

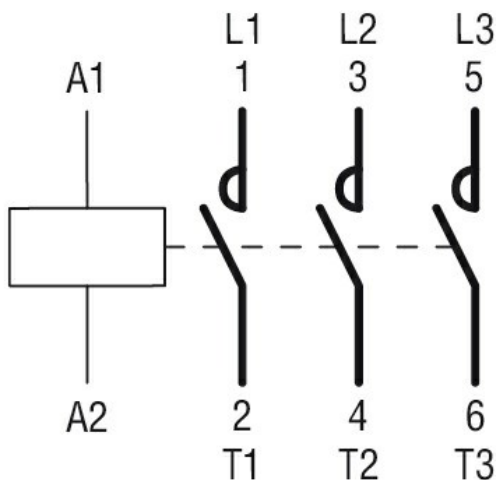
Pollution degree

3

Dimensions



Wiring diagrams



Certifications and compliance

Compliance

CSA C22.2 n° 60947-1
CSA C22.2 n° 60947-4-1

IEC/EN/BS 60947-1

IEC/EN/BS 60947-4-1

UL 60947-1

UL 60947-4-1

Certificates

CCC

cULus

ETIM classification

ETIM 8.0

EC000066 -
Power contactor,
AC switching